



**ECO-FRIENDLY**  
**GAS PRESSURE REGULATOR**  
**EF**

**SUITABLE FOR UP TO 30% H<sub>2</sub> FEED INTO THE GAS NETWORK**

## Gas pressure regulator

The electric operated gas regulator of type **EXFLOW EF** is installed for flow and/or pressure control. The type of control (flow/pressure) can be chosen freely.

The regulator uses casing series G56 for PN 16/40 (PN 16, ANSI 150; PN 40, ANSI 300) the series G57 is used for pressure up to 100 bar (PN 100, ANSI 600).

## Benefits

- ◆ **Flow-/ and or pressure regulation**  
easy handling by use of Gas-doc
- ◆ **Free choice of field of pressure**  
0 – 100 bar
- ◆ **Easy Maintenance**  
by easy entrée to seat
- ◆ **Combination with monitor / SSV**  
integrated in one valve
- ◆ **according to DIN, DVGW, EN 334**  
certificated according to EU-standards

## Construction of EXFLOW

The regulator consists of the main parts as casing G56, G57, the valve, build as a tube slide valve and the topped actuator performed as an ex-motor in various types.

Each step of turn of the modulating actuator causes a direct movement of the valve.

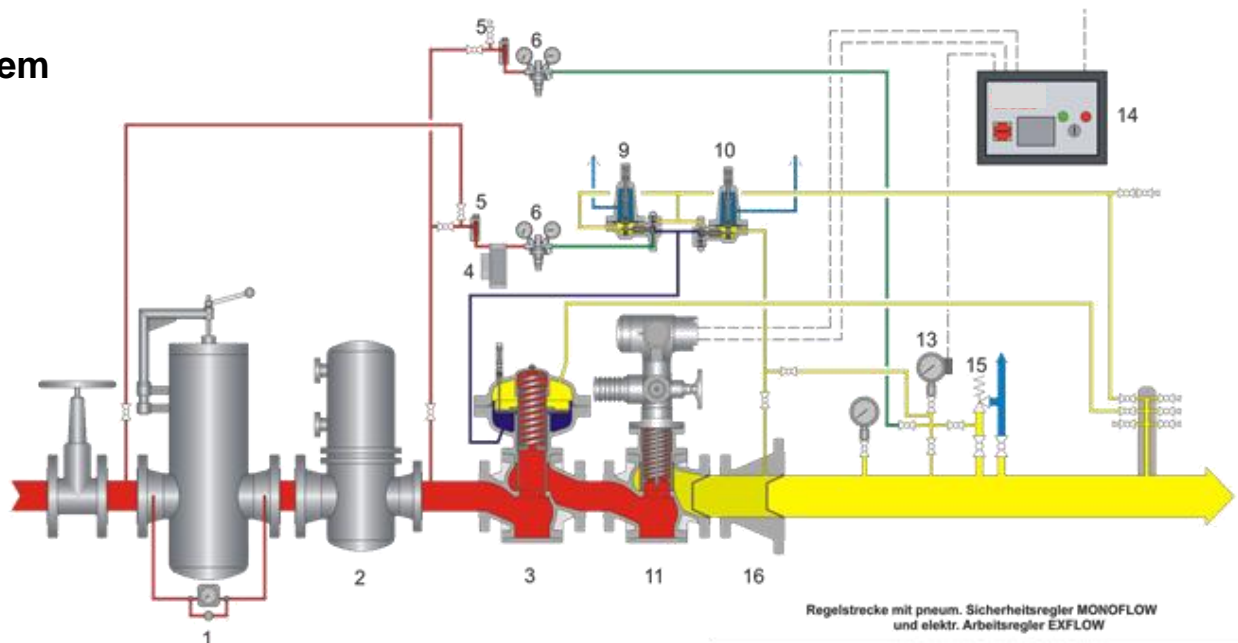
In order to safe the plant against to high downstream pressure the electrical regulator can be fit with a monitor regulator are a safety shut of valve in one valve. This solution provides a full value working device, as used normally in gas pressure reducing stations.

Additional to the built in silencer in the regulator, a pipe inline silencer type LN40 can be foreseen to fulfil low noise character. This LN40 is the extension to the downstream diameter at the same time.

As actuators ex-proof electronic motors are used. The modulating time as well as the used torque can be easily programmed at site. This an essential feature to adapt the system for any case of future parameter of the client.

Therefore the gas regulator EXFLOW EF becomes the perfect electric gas regulator for optimizing supply volumes, while at the same time reliably control of the gas pressure is performed.

## System

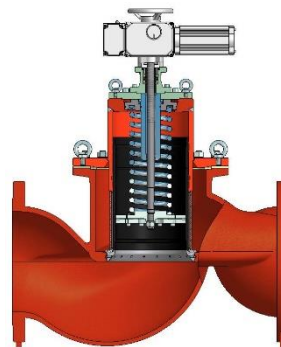
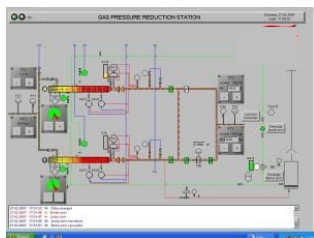


1 Eingangdruck 2 Stelldruck 3 Entlüftung  
4 Zwischenndruck 5 Ausgangdruck 6 Ausgangdruck

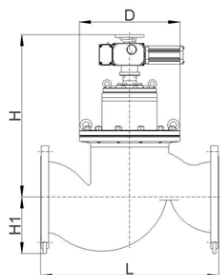
- |                     |                           |
|---------------------|---------------------------|
| 1 Filter Separator  | 9 Pilot regulator         |
| 2 Heat exchanger    | 10 Close fastener         |
| 3 Monitor regulator | 11 EXFLOW regulator       |
| 4 Pilot gas filter  | 13 Gauge                  |
| 5 Bloc ball valve   | 14 Gas-doc of HEAT energy |
| 6 Pre regulator     | 12 Closing spring         |

## EXFLOW EF and Gas-doc

Programmable controllers are also part of the EXFLOW system, considered already during planning and design. Accordingly, there is a choice of using the customer's own guidance systems or installing preprogrammed SPC's fitted with a touch screen. The optimum solution obviously is the digital station control system Gas-doc developed by HEAT energy.



## Technical Data



## Dimensions (mm)



DN Inlet / Outlet	ANSI 150 PN16 L	ANSI 300 PN40 L	ANSI 600 PN100 L	Seat	D	H	H1	SAV G40 G56/57.40 H1
25 / 25	184	197	210	30	370	340	180	380
50 / 50	254	267	286	58	370	340	180	380
80 / 150	298	318	337	88	455	350	200	400
100 / 150	298	318	337	100	455	440	200	400
150 / 150	451	473	508	138	600	440	220	430
150 / 200	451	473	508	150	600	530	220	430
200 / 200	650	650	650	184	600	870	250	---
250 / 250	730	730	730	200	770	870	250	---
300 / 300	960	960	960	250	770	790	250	---
400 / 400	1100	1100	1100	300	770	1000	300	---

Gesamtabmessungen, je nach Ausführung, auf Anfrage

exact data according to our detailed quotation!

## Flanges

DIN PN 16, PN 25, PN 40,  
PN 63, PN 100  
ANSI 150 RF, 300 RF, 600 RF

## Material

Casing: GGG / GS / steel  
Membran: Buna-N nylon / reinforced  
O-rings: Sonder-Buna N; FPM

## Medium

Standard: non-aggressiv  
On request: sourgas

## Temperature for

Standard: -10 bis + 60°C  
On request: -60 bis +100°C

# HEAT

GAS AND OIL EQUIPMENT

## HEAT energy GmbH

A-2362 Biedermannsdorf, Rheinboldtstraße 16  
Tel.: +43 664824 1616  
[heat-energy@heatgroup.at](mailto:heat-energy@heatgroup.at)  
[www.heatgroup.at](http://www.heatgroup.at)

## HEAT gaswärmetechnische Anlagen GmbH

D-34119 Kassel, Querallee 41  
Tel.: +49 561 288 56-0  
Fax: +49 561 288 56-20  
[office@heatgroup.de](mailto:office@heatgroup.de)  
[www.heatgroup.de](http://www.heatgroup.de)

## HEAT Romania S.R.L.

RO-547 185 Cristesti (Targu Mures)  
Strada Principală nr. 801  
Tel.: +40 365 430 057  
Fax: +40 365 430 057  
[office@heatgroup.ro](mailto:office@heatgroup.ro)  
[www.heatgroup.ro](http://www.heatgroup.ro)

## HEAT Poland Sp. z o.o.

PL-40 761 Katowice, ul. Twarda 21  
Tel.: +48 32 252 17 82  
Fax: +48 32 252 17 82  
[info@heatgroup.pl](mailto:info@heatgroup.pl)  
[www.heatgroup.pl](http://www.heatgroup.pl)

QR-Code

Prospekt

## HEAT energy Kft.

H-8800 Nagykanizsa, Erdész u. 28.  
Tel.: +36 93 537 140  
Fax: +36 93 537 142  
[heat-energy@heatgroup.hu](mailto:heat-energy@heatgroup.hu)  
[www.heatgroup.hu](http://www.heatgroup.hu)

## LOG Oiltools Kft.

H-8800 Nagykanizsa, Erdész u. 28.  
Tel.: +36 93 537 140  
Fax: +36 93 537 142  
[info@logoiltools.hu](mailto:info@logoiltools.hu)  
[www.logoiltools.hu](http://www.logoiltools.hu)

## HEAT Hungary Kft.

H-1047 Budapest, Attila u. 63.  
Tel.: +36 1 369 15 32  
Fax: +36 1 369 72 16  
[heatgroup@heathungary.hu](mailto:heatgroup@heathungary.hu)  
[www.heathungary.hu](http://www.heathungary.hu)

## HEAT Bulgas OOD

BG-1113 Sofia, Fr. Joliot Curie Str. 20, Office 803  
Tel.: +359 88 945 2607  
[office@heatgroup.bg](mailto:office@heatgroup.bg)  
[www.heatgroup.at](http://www.heatgroup.at)

QR-Code

Anfrageblatt

## HEAT Holding International GmbH

A-2362 Biedermannsdorf, Siegfried Marcus-Straße 9  
Tel.: +43 2236 73 130  
Fax: +43 2236 73 130-300  
[hhi@heatgroup.at](mailto:hhi@heatgroup.at)  
[www.heatgroup.at](http://www.heatgroup.at)